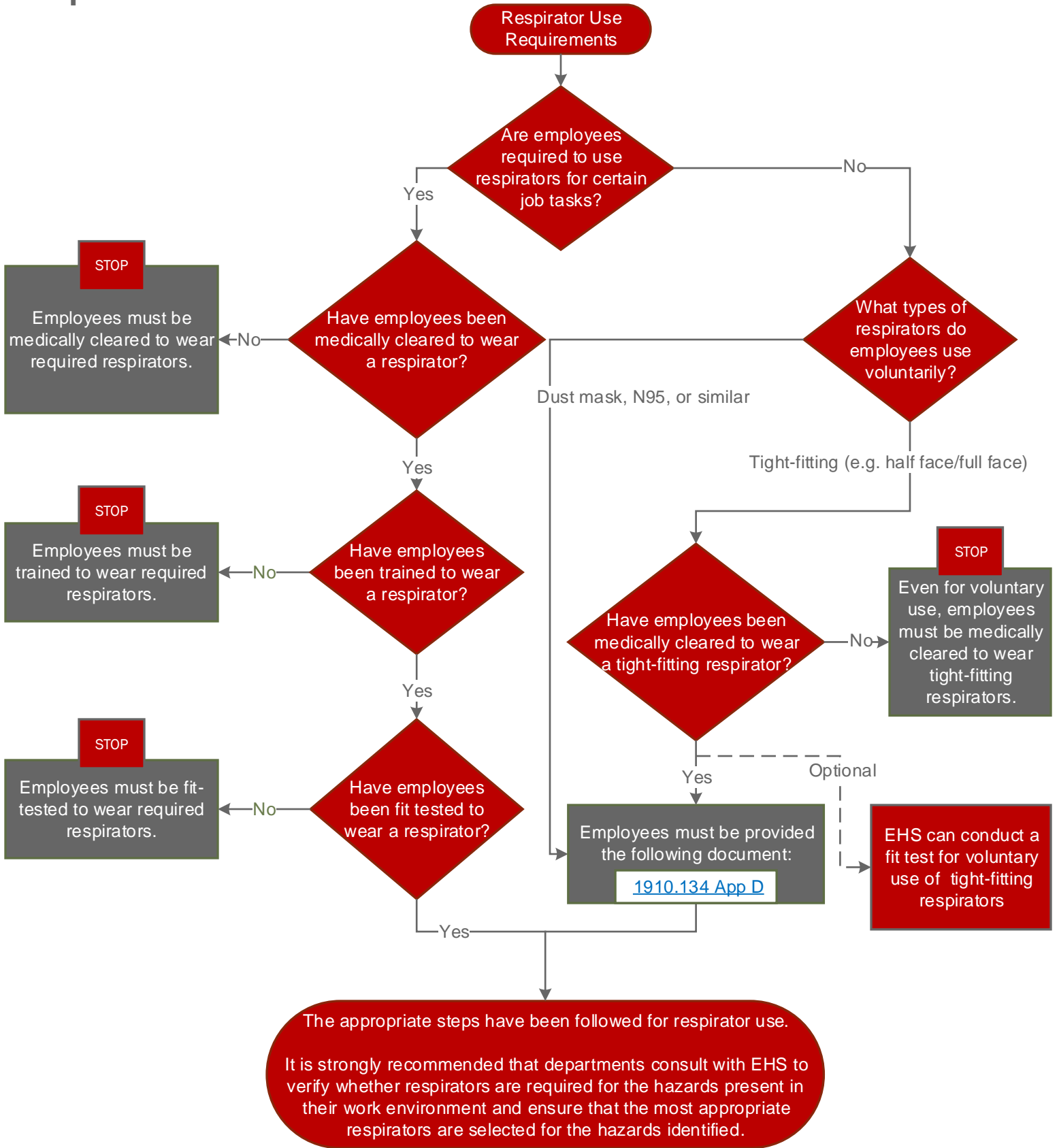


Environmental Health and Safety

Respirator Use Flowchart



Environmental Health and Safety

Respirator Use Resources

Medical Clearance



Employees who are required to use respirators for their normal job duties or those who voluntarily wear tight-fitting respirators (i.e. full or half face respirators) must be medically cleared before the initial use of a respirator.

The employee's supervisor/supervising department initiates the medical evaluation with Employee Health Services by completing the [Online Risk Assessment Tool](#).

For regional campuses and other situations where necessary, the medical evaluation may be conducted by through a different physician or healthcare provider. Contact EHS if you have questions regarding your location's process.

Training



Employees who are required to use respirators for their normal job duties must take the [online respiratory protection training](#).

This training must be supplemented with any additional job-specific training related to respirator use.

Fit Testing



Employees who are required to use respirators for their normal job duties must be fit-tested for tight-fitting respirators and filtering facepiece respirators once training and medical clearance has been completed.

EHS performs fit testing for respirator users. A fit test can be requested through [this online scheduling tool](#). Fit testing can also be requested for voluntary respirator use though it is not required.

The most comprehensive information regarding respirator use can be found within [The Ohio State University Respiratory Protection Program](#).

For questions regarding this program, contact EHS at 614-292-1284 or ehs@osu.edu